



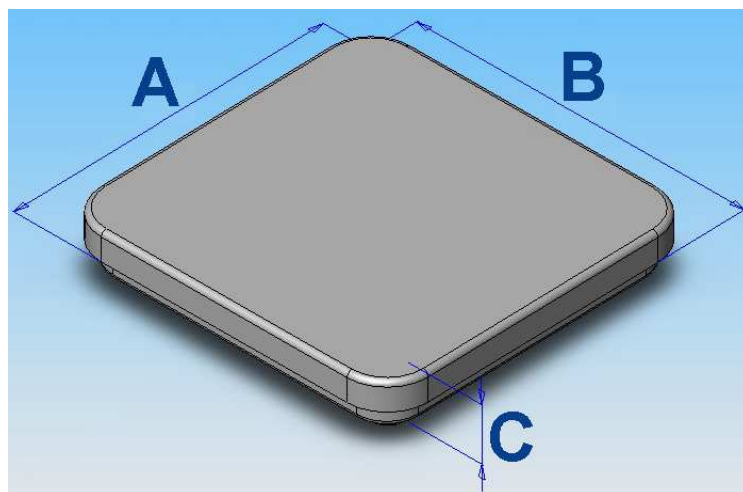
FCW & FEW



- Top cover in strong SS (FCW) or ABS platform covering a strong metal construction (FEW).
- Indicator bracket for wall or table mount.
- AC/DC adaptor and battery function.
- 10 h in continuous mode and much longer using power save function.
- Large 25 mm wide angle & “easy-to-read” LCD display with backlight.
- NET / GROSS function.
- TARE function.
- Unit conversion.

**“INNOVATIVE APPLICATIONS
LATEST TECHNOLOGY
LONG EXPERIENCE”**

Specifications:



Dimensions and Capacity:

Model:	A	B	C	Capacity:	Division:	Net Weight:
FCW-30	405 mm	305 mm	45 mm	30 kg	20 g	3,2 kg
FCW-60	405 mm	305 mm	45 mm	60 kg	50 g	3,2 kg
FCW-150	405 mm	305 mm	45 mm	150 kg	100 g	3,2 kg
FEW-300	900 mm	600 mm	80 mm	300 kg	200 g	12,8 kg

Power requirement:

Adapter specification:	Input: 100/230V AC 50 ~ 60Hz Output: 12V / 1000mA
Continues operation time:	10 hours continues use
Auto off function:	Yes

General:

Operating temperature	0°C to 40°C
Operating humidity	< 85%RH Max. (Non-condensing)

Authorized Dealer:

***“INNOVATIVE APPLICATIONS
LATEST TECHNOLOGY
LONG EXPERIENCE”***

Specifications are subject to change without notice.